

Actuator

MD52



Features

- ◆ MD52 features its stainless extension tube, suitable to work in the harsh condition against dust and rain.
- ◆ Main applications : industrial equipment
- ◆ Input voltage : 24V DC
- ◆ Max. load : 1000N (push / pull)
- ◆ Max. current : 5A @ 24V DC
- ◆ Max. speed : 25mm/sec @ no load
- ◆ Stroke : 100 ~ 300 mm (other stroke available)
- ◆ Duty cycle : 10% or 2 min continuous operation in 20 min.
- ◆ IP Protection level : IP66
- ◆ Color : Black
- ◆ Noise Level : ≤ 70 dB
- ◆ Stainless front connector

Options

◆ POT

Compatibility

1. Control box

N/A

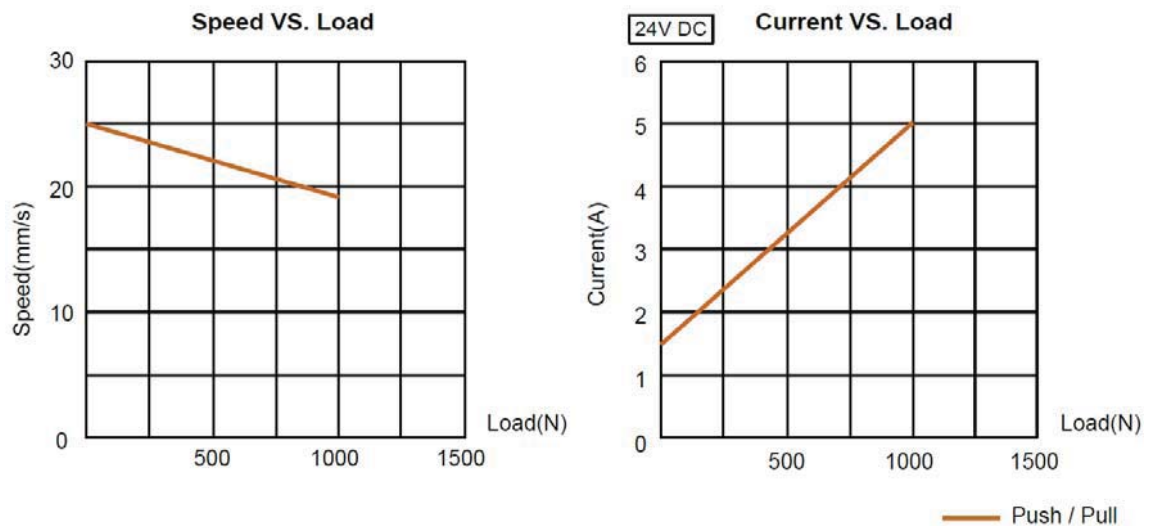
2. Handset

N/A

3. Accessory

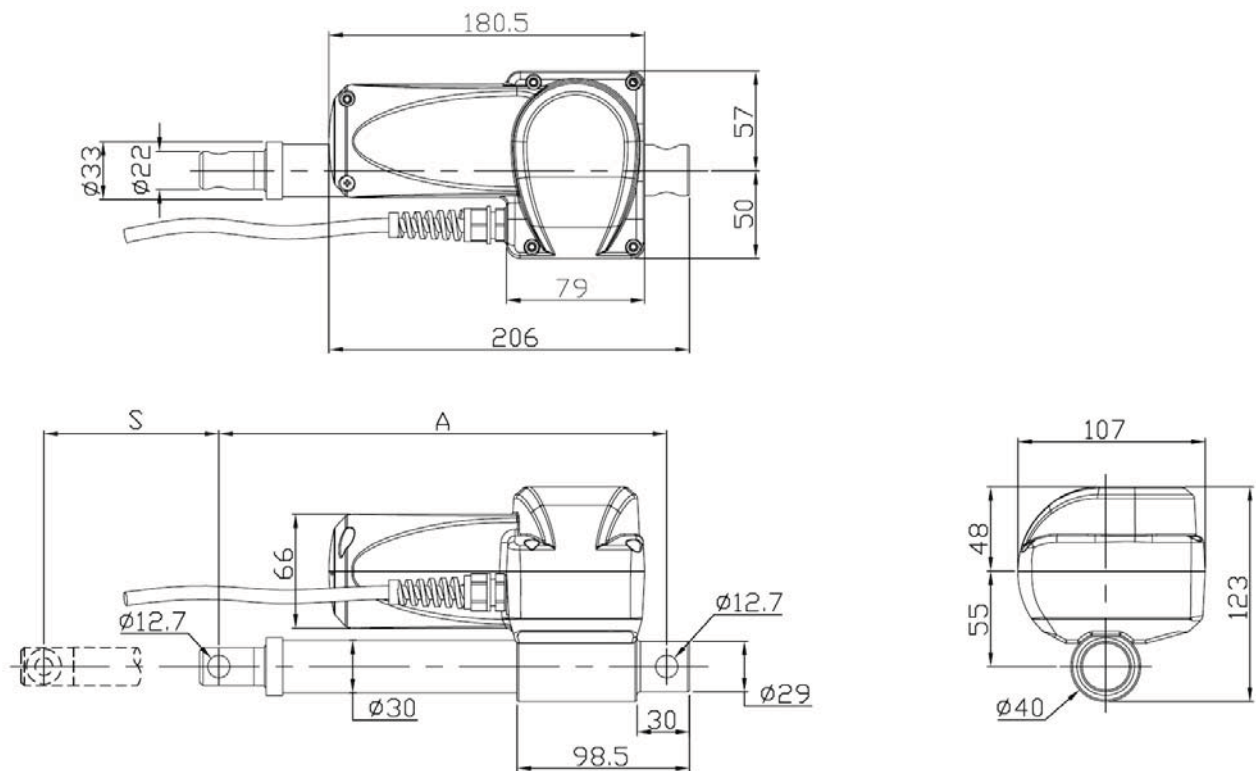
N/A

Performance Data



Model No.	Push Max. (N)	Pull Max. (N)	Speed (mm/s)		Current (A) @ 24V DC	
			No load	Full load	No load	Full load
MD52-24-M6-XXX.XXX	1000	1000	25	18.5	1.5	5

Dimensions



Unit: mm

- ◆ Available stroke (S) range = 100~300mm
- ◆ Retracted length (A) $\geq S+156$ mm
- ◆ Extended length (B) = $S+A$

Ordering Key

