

Actuator MD50



Features

- ◆ MD50 is a compact and powerful actuator designed for the use in furniture and homecare application. It's an ideal solution for applications that require high force but limited installation space.
- ◆ Main applications : furniture and homecare
- ◆ Input voltage : 24V DC
- ◆ Max. load : 3500N (push) / 2000N (pull)
- ◆ Max. current : 3.8A @ 24V DC
- ◆ Max. speed at no load : 11.4 mm/sec
- ◆ Max. speed at full load : 3.8 mm/sec @ 3500N
- ◆ Stroke : 50 ~ 600 mm (other stroke available)
- ◆ Duty cycle : 10% or 2 min continuous operation in 20 min.
- ◆ Color : Black
- ◆ Certified : EN60601-1-2, IEC 61000-4-2, IEC6100-4-8, IEC61000-4-3
- ◆ Noise Level : \leq 65dB
- ◆ Preset limit switches

Options

◆ Push only

Compatibility

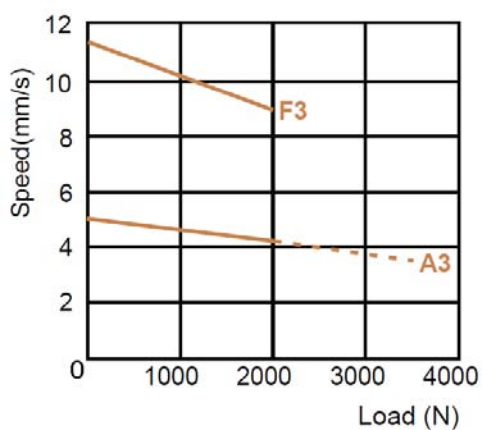
1. Control box
CB3T, CB4M

2. Accessory
None

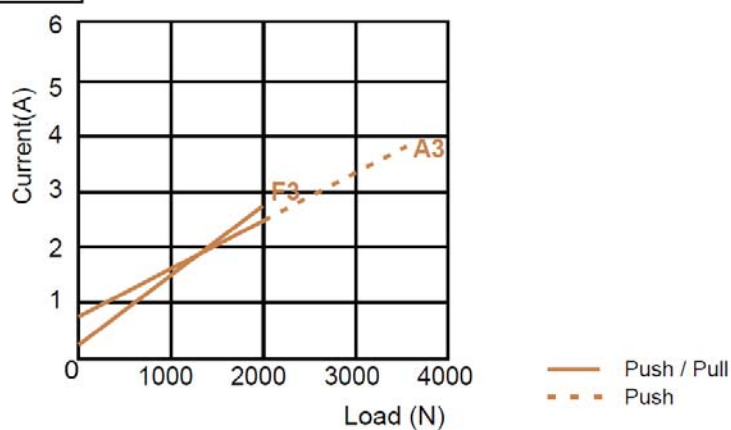
Performance Data

Model No.	Push Max. (N)	Pull Max. (N)	Speed (mm/s)		Current (A) @ 24V DC	
			No load	Full load	No load	Full load
MD50-24-A3-XXX.XXX	3500	2000	5	3.8	0.8	3.8
MD50-24-F3-XXX.XXX	2000	2000	11.4	9	0.3	2.7

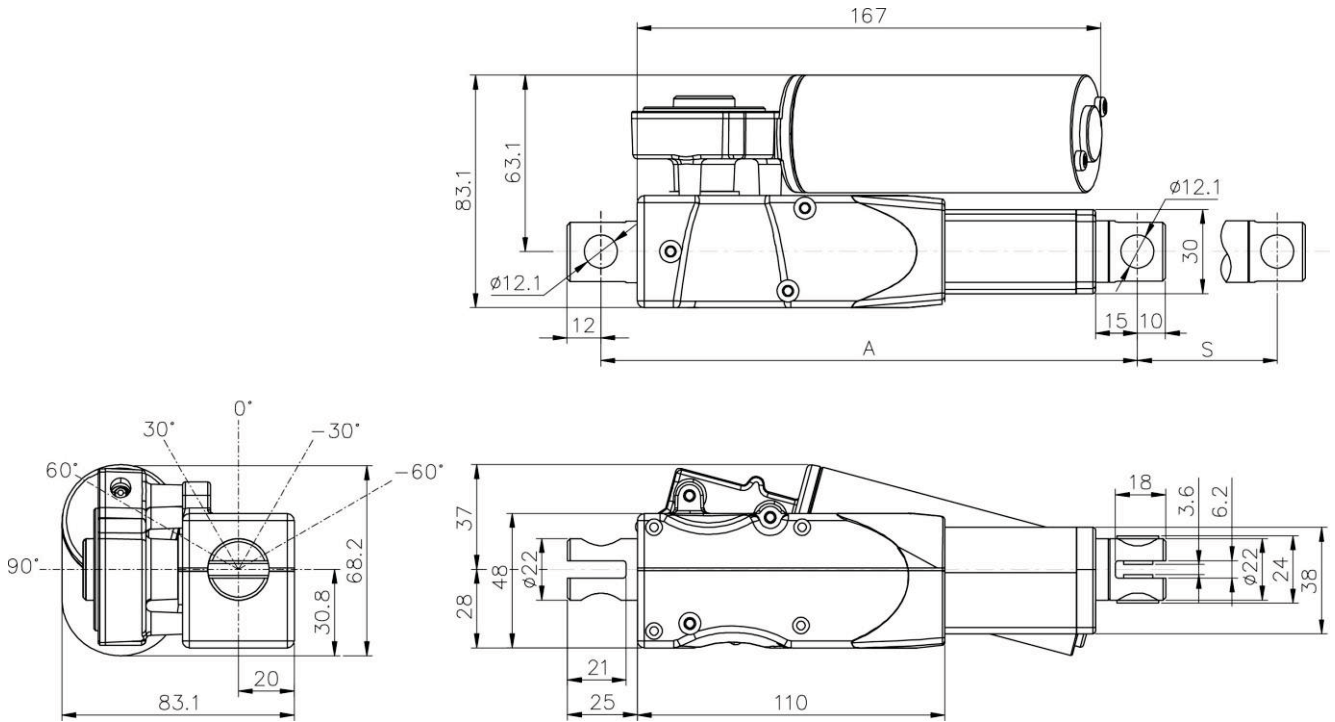
Speed vs Load



24V DC Current vs Load

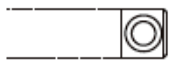
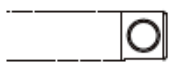



Dimensions






Unit: mm

◆ Front Connectors

-  C 1 x Metal + Nylon bushing
 $\phi 10$
-  C 2 x Metal
 $\phi 12$
-  C 3 x Metal + Brass bushing
 $\phi 10$

◆ Rear Connectors

-  C x 1 Metal + Nylon bushing
 $\phi 10$
-  C x 2 Metal
 $\phi 12$
-  C x 3 Metal + Brass bushing
 $\phi 10$

◆ Available stroke (S) range = 50~600mm

◆ Retracted length (A)

- Stroke ≤ 55 mm , Retracted length (Dimension A) =192 mm.
- Stroke ≤ 300 mm , Retracted length (Dimension A) =S+137 mm.
- Stroke > 300 mm , Retracted length (Dimension A) = S+156 mm.

◆ Extended length (B) = S+A

Ordering Key

MD50—□□—□□—□□□.□□□—C□□—□□

Input Voltage

24 : 24V DC

Motor and Spindle Type

A3

F3

(Refer to Performance Data)

A : Retracted Length

(Refer to paragraph Dimensions)

B : Extended Length

(Refer to paragraph Dimensions)

Front Connector

1 : Metal + Nylon bushing

2 : Metal

3 : Metal + Brass bushing

Rear Connector

1 : Metal + Nylon bushing

2 : Metal

3 : Metal + Brass bushing

Option

PO : Push only



北京泰瑞恩商贸有限公司
Beijing Torion Trading Co.,Ltd.

Tel:13801253818 Fax:010-84067150
www.torion.cn sales@torion.cn