

Actuator

LD20



Features

- ◆ LD20 is a compact actuator with high load capability which is designed for use in industrial, homecare and furniture. It's an ideal solution for the applications where installation space is limited, such as window opener or adjustable car driver seat.
- ◆ Main applications : Industrial, homecare, furniture
- ◆ Input voltage : 24V DC / 12V DC
- ◆ Max. load : 2500N (push/pull)
- ◆ Max. current : 4.4 A @ 12V DC
- ◆ Max. speed at no load : 30 mm/sec
- ◆ Max. speed at full load : 4.8 mm/sec @ 2500N
- ◆ Stroke : 100~300 mm (other strokes are available)
- ◆ Duty cycle : 25% or 1 min continuous operation in 4 min.
- ◆ IP protection level : IP54
- ◆ Color : Aluminum grey
- ◆ Noise level : ≤ 70 dB
- ◆ Preset limit switches

Options

- ◆ IP65
- ◆ Single / dual Hall sensor
- ◆ Customized front connector

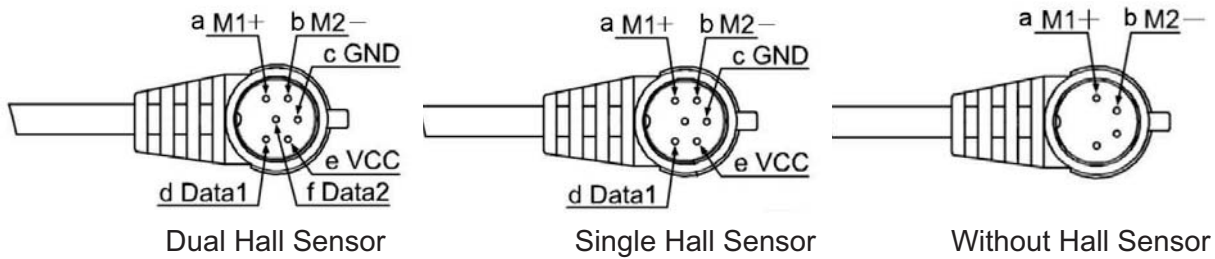
Compatibility

1. **Control Box** (For LD20 equipped with F type plug)
T-Control, CS1, CS2, CB3T, CB4M

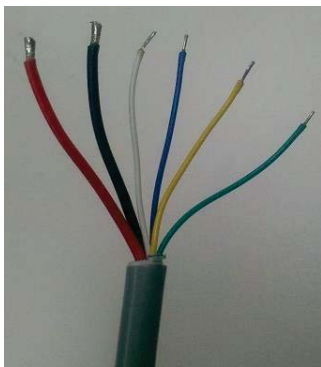


F type plug housing

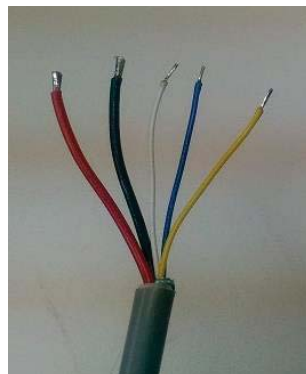
2. **Pin Assignments on F type plug & Tinned Wires (Defined by color)**



Pin		a	b	c	d	e	f
Wire color	Dual Hall Sensor	Red (M+)	Black (M-)	White (GND)	Blue (Data 1)	Yellow (VCC)	Green (Data 2)
	Single Hall Sensor			—	—	—	—
	Without Hall Sensor			—	—	—	—



Dual Hall Sensor



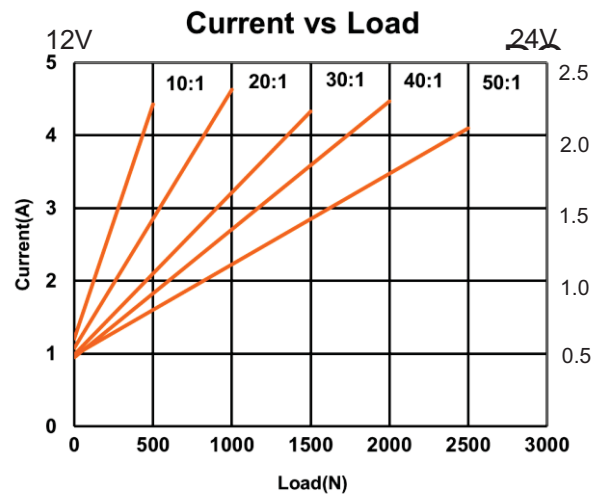
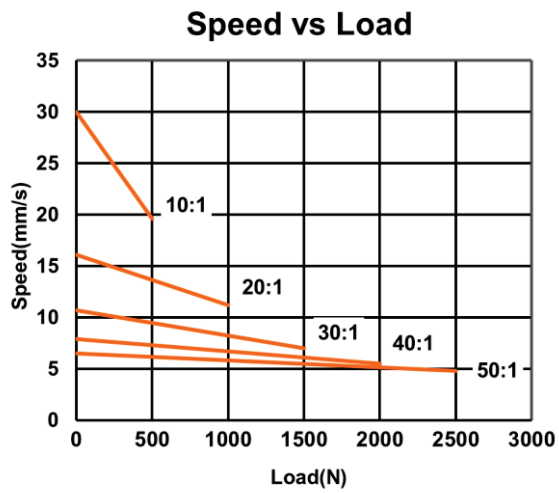
Single Hall Sensor



Without Hall Sensor

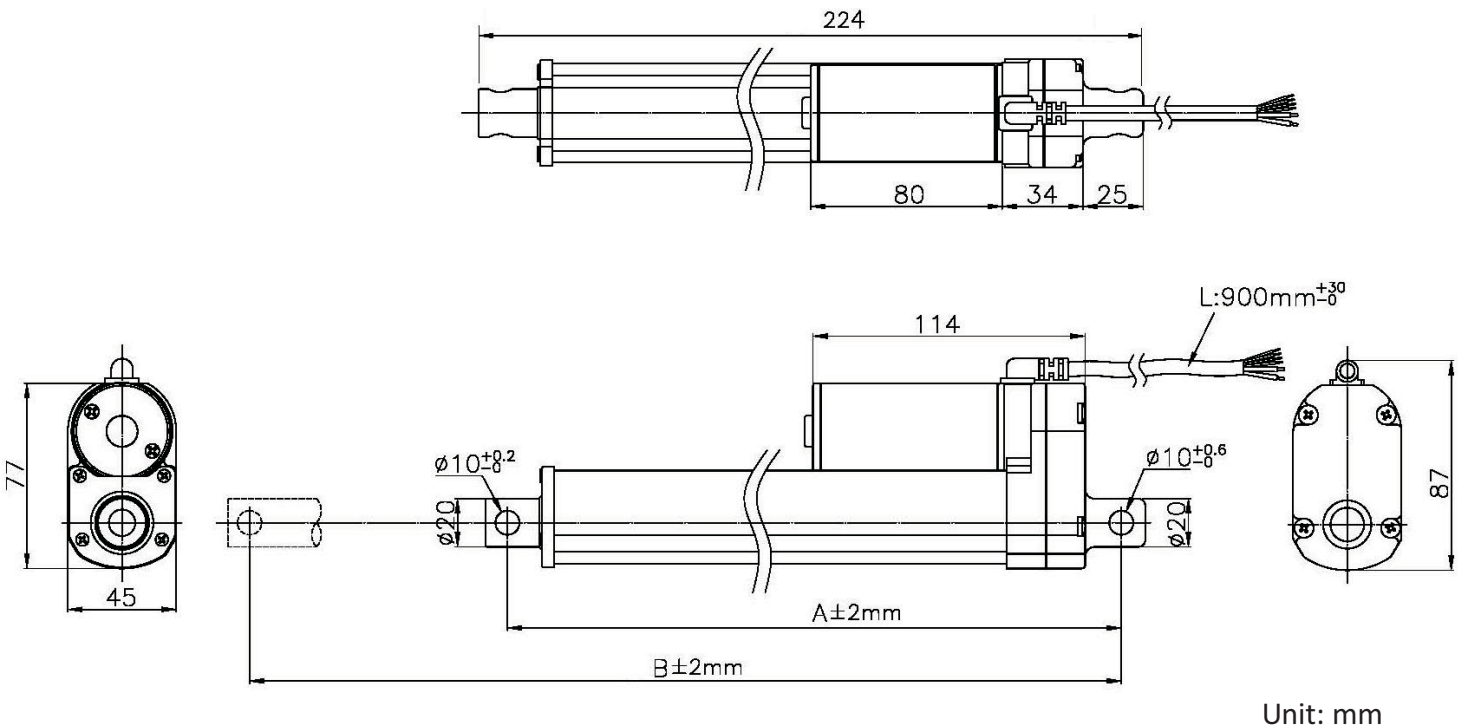
Performance Data

Model No.	Push/Pull Max. (N)	Speed (mm/s)		Current (A)			
		No load	Full load	No load		Full load	
				12V	24V	12V	24V
LD20-XX-10-G4-XXX	500	30.0	19.6	1.2	0.6	4.4	2.4
LD20-XX-20-G4-XXX	1000	16.1	11.2	1.0	0.5	4.4	2.3
LD20-XX-30-G4-XXX	1500	10.7	7.0	1.0	0.5	4.4	2.3
LD20-XX-40-G4-XXX	2000	7.9	5.5	1.0	0.5	4.4	2.2
LD20-XX-50-G4-XXX	2500	6.5	4.8	0.9	0.5	4.1	2.2

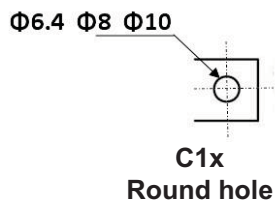


Dimensions

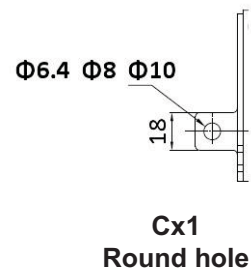
	4"	6"	8"	10"	12"
Stroke	100	150	200	250	300
Retracted Length (A)	205	255	305	355	405
Extended Length (B)	305	405	505	605	705



◆ Front connector



◆ Rear Connector



Ordering Key

LD20—□□—□□—G4—□□□—□□□—□□

Input Voltage

12 : 12V DC
24 : 24V DC

Gear Ratio

10 : 10:1
20 : 20:1
30 : 30:1
40 : 40:1
50 : 50:1

Motor and Spindle Type

Stroke

100 : 100mm
150 : 150mm
200 : 200mm
250 : 250mm
300 : 300mm

Option

Blank : Without Hall sensor
HS1 : Single Hall sensor
HS2 : Dual Hall sensor

IP Protection Level

Blank : IP54
65 : IP65