

Actuator ID12



Features

- ◆ ID12 features its heavy load capability and high speed design, which is suitable for various industrial applications requiring rapid movement. The tetragonal shape outer tube make ID12 can be installed easily. The optional adjustable external reed sensor is convenient for the user to provide further control of the movement.
- ◆ Main applications : Industrial
- ◆ Input voltage : 24V DC / 12V DC
- ◆ Max. dynamic load : 3,500N(ACME) , 7,000N(Ball Screw)
- ◆ Max. static load : 4,500N(ACME) , 13,600N(Ball Screw)
- ◆ Max. current : 26.4 A @ 12V DC, 13.2A @ 24V DC
- ◆ Max. speed : 67.1 mm/sec @ no load
- ◆ Stroke : 100~600 mm (other strokes are available)
- ◆ Duty cycle : 25% or 2 min continuous operation in 8 min
- ◆ IP protection level : IP66, IP69K
- ◆ Color : Black
- ◆ Certified : EN61000-4, EN61000-6
- ◆ Ball screw or ACME threaded spindle available
- ◆ Ambient operating temperature : -25°C ~ +65°C
- ◆ Overload protection by clutch

Options

- ◆ Potentiometer (POT), analog positioning feedback
- ◆ Internal adjustable cam limit switches (LT)
- ◆ External adjustable reed sensor. NC-type (i.e. normal close) is default. And NO-type (i.e. normal open) is also available, please indicate to sales window if required.

Compatibility

1. Control Box

CI10, CIS1, CIS2, CIS3

2. Handset

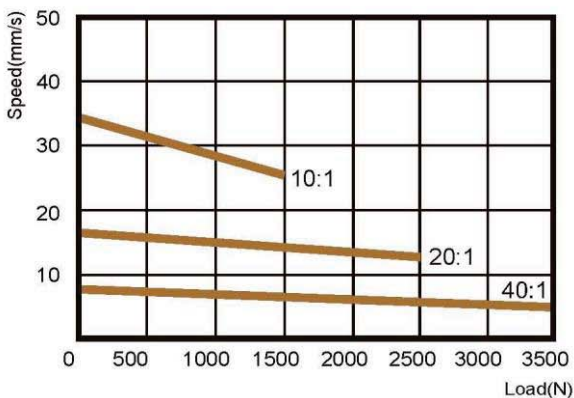
HM6R, XM4H

Performance Data

◆ ACME spindle

Model No.	Push/Pull Max. (N)	Speed (mm/s)		Current (A)			
		No load	Full load	No load		Full load	
				12V	24V	12V	24V
ID12-XX-10-A-XXX	1500	33.5	26.7	3.4	2.2	17.6	8.8
ID12-XX-20-A-XXX	2500	16.8	14.3	3.4	2.2	13.2	6.6
ID12-XX-40-A-XXX	3500	8.4	7.4	3.4	2.2	11.0	5.5

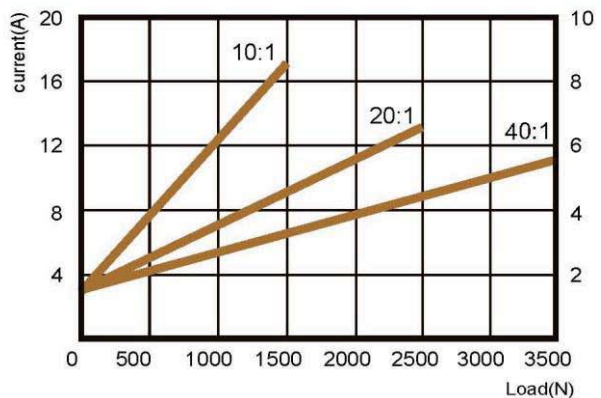
Speed vs Load



12V DC

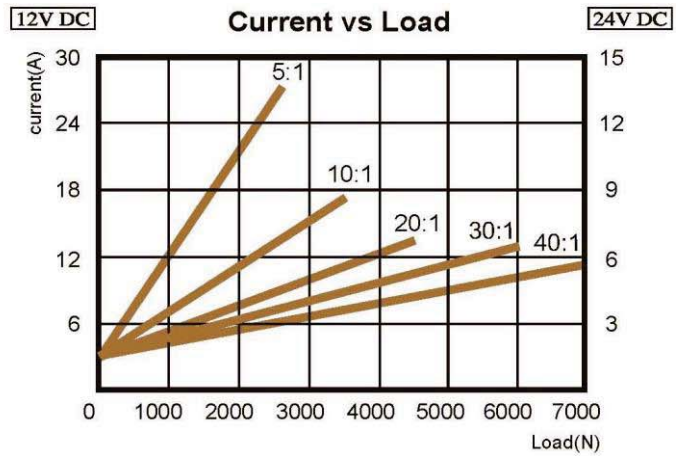
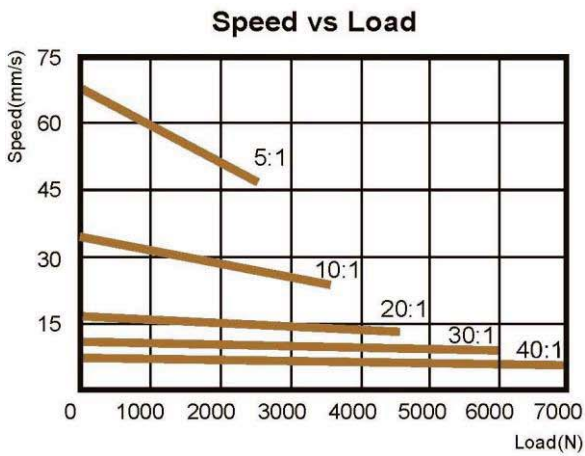
Current vs Load

24V DC



◆ Ball Screw spindle

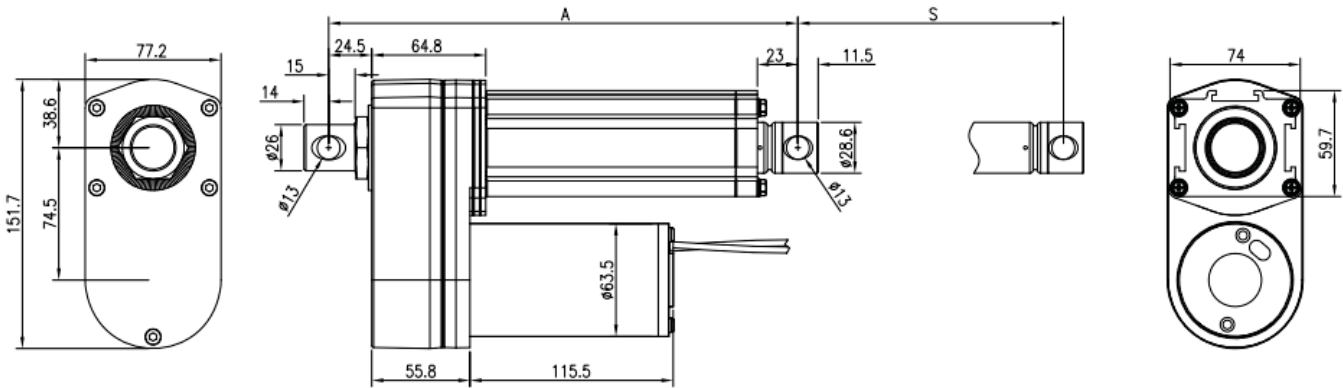
Model No.	Push/Pull Max. (N)	Speed (mm/s)		Current (A)			
		No load	Full load	No load		Full load	
				12V	24V	12V	24V
ID12-XX-05-B-XXX	2500	67.1	47.2	3.4	2.2	26.4	13.2
ID12-XX-10-B-XXX	3500	33.5	26.7	3.4	2.2	17.6	8.8
ID12-XX-20-B-XXX	4500	16.8	14.3	3.4	2.2	13.2	6.6
ID12-XX-30-B-XXX	6000	11.2	9.8	3.4	2.2	12.1	6.1
ID12-XX-40-B-XXX	7000	8.4	7.4	3.4	2.2	11.0	5.5



Dimensions—ID12 ACME

◆ Standard

	4"	6"	8"	12"	18"	24"
Stroke (S±2.5mm)	100	150	200	300	450	600
Retracted Length (A±3.8mm)	266	316	366	466	666	816



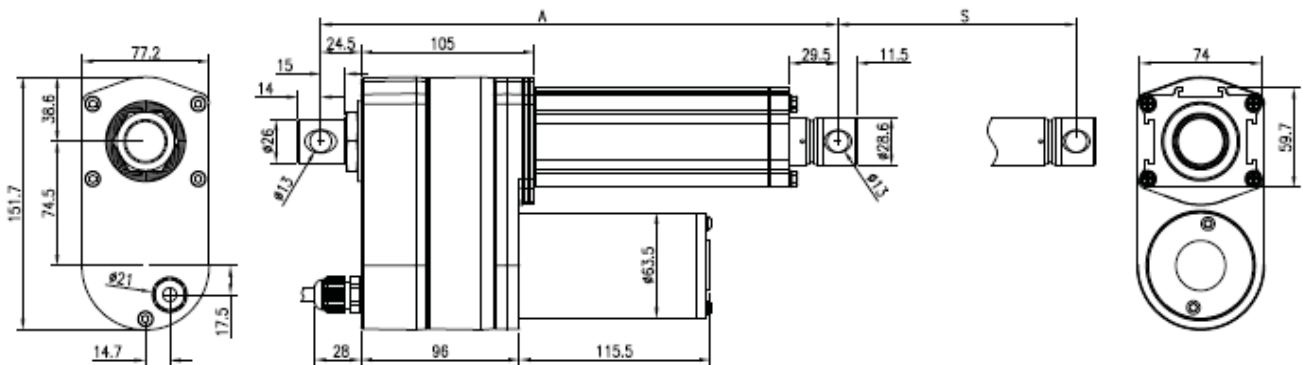
Unit : mm

◆ With POT

	4"	6"	8"	12"	18"	24"
Stroke (S±2.5mm)	100	150	200	300	450	600
Retracted Length (A±3.8mm)	306	356	406	506	706	856

◆ With LT

	4"	6"	8"	12"	18"	24"
Stroke (S±5.0mm)	100	150	200	300	450	600
Retracted Length (A±5.0mm)	362	412	462	612	762	912

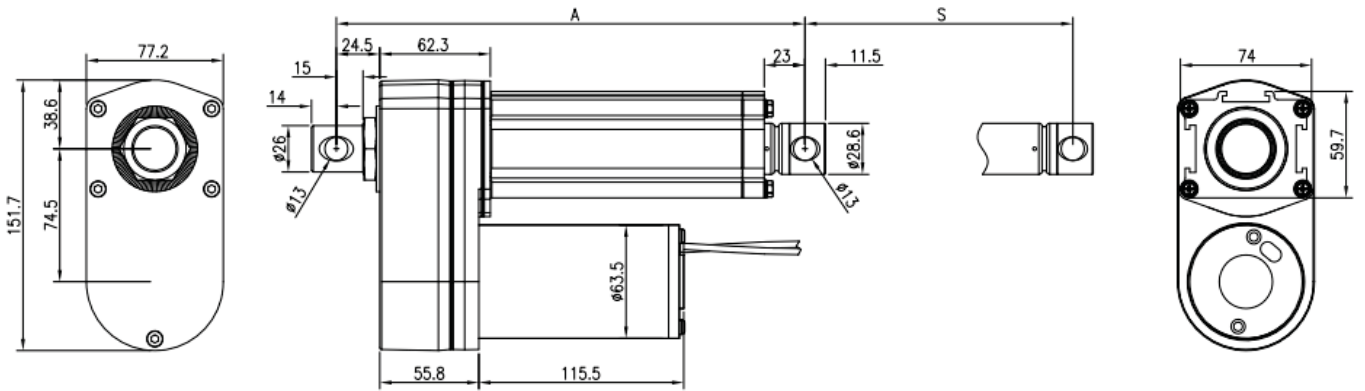


Unit : mm

Dimensions—ID12 Ball Screw

◆ Standard

	4"	6"	8"	12"	18"	24"
Stroke (S±2.5mm)	100	150	200	300	450	600
Retracted Length (A±3.8mm)	319	369	419	519	719	869



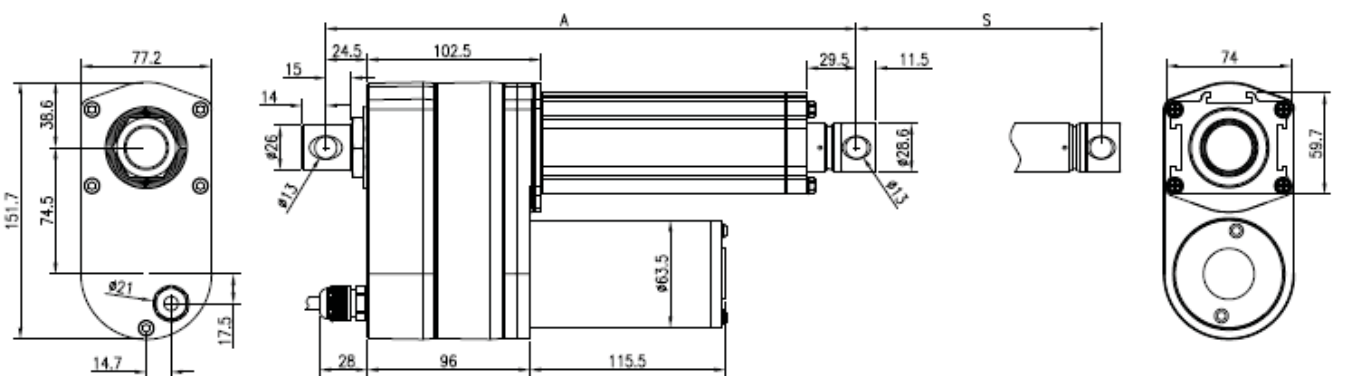
Unit : mm

◆ With POT

	4"	6"	8"	12"	18"	24"
Stroke (S±2.5mm)	100	150	200	300	450	600
Retracted Length (A±3.8mm)	359	409	459	559	759	909

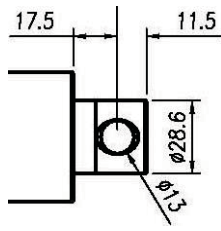
◆ With LT

	4"	6"	8"	12"	18"	24"
Stroke (S±5.0mm)	100	150	200	300	450	600
Retracted Length (A±5.0mm)	415	465	515	665	815	965



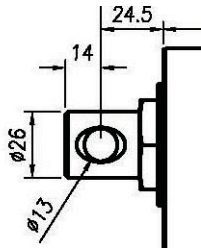
Unit : mm

◆ Front connector



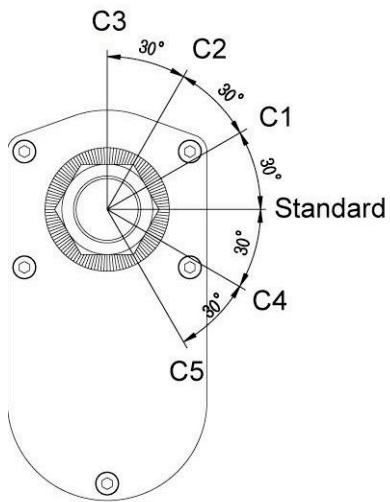
Unit : mm

◆ Rear connector



Unit : mm

◆ Orientation of front/rear connector hole



(Diagram is view from rear connector)

Wiring

(Please refer to ID10 User Guide)

Ordering Key

ID12—□□—□□—□—□□□—□□□□□□—□□

Voltage

12 : 12V DC
24 : 24V DC

Gear Ratio

05 : 5:1 (Ball screw only)
10 : 10:1
20 : 20:1
30 : 30:1 (Ball screw only)
40 : 40:1

Spindle Type

A : ACME
B : Ball Screw

Stroke

100 : 100mm
150 : 150mm
200 : 200mm
300 : 300mm
450 : 450mm
600 : 600mm

Options

: Standard (keep it blank)
LT : Internal adjustable cam limit switch
POT : Potentiometer
ER1 : External adjustable reed sensor x 1
ER2 : External adjustable reed sensor x 2

Front/Rear Clevis Orientation

: 0° Standard (keep it blank)
C1 : 30° CCW (view from rear connector)
C2 : 60° CCW
C3 : 90° CCW
C4 : 30° CW
C5 : 60° CW



北京泰瑞恩商贸有限公司
Beijing Torion Trading Co.,Ltd.

Tel:13801253818 Fax:010-84067150
www.torion.cn sales@torion.cn