

Actuator ID10S



Features

- ◆ ID10S is a robust and powerful actuator, designed for heavy-duty applications in harsh environments like solar tracker. It features high load capability, long lifetime and low power consumption. The adjustable limit cam is convenient for the user to fine-tune the stroke. Ball screw or ACME screw threaded spindle available.
- ◆ Main applications : Industrial
- ◆ Input voltage : 24V DC
- ◆ Max. dynamic load : 9000N(Ball Screw), 5500N(ACME)
- ◆ Max. static load : 17100N(Ball Screw), 13600N(ACME)
- ◆ Max. current : 3.9 A @ 24V DC
- ◆ Max. speed at no load : 5.6 mm/sec
- ◆ Max. speed at full load : 4.5 mm/sec
- ◆ Stroke : 450~900 mm
- ◆ Duty cycle : 10% or Max. 3 min continuous operation.
- ◆ IP protection level : IP65
- ◆ Color : Silver, Black
- ◆ Certified : EN61000-4, EN61000-6
- ◆ Ambient operating temperature : -25°C~+65°C
- ◆ Overload protection by clutch
- ◆ Steel extension tube

Options

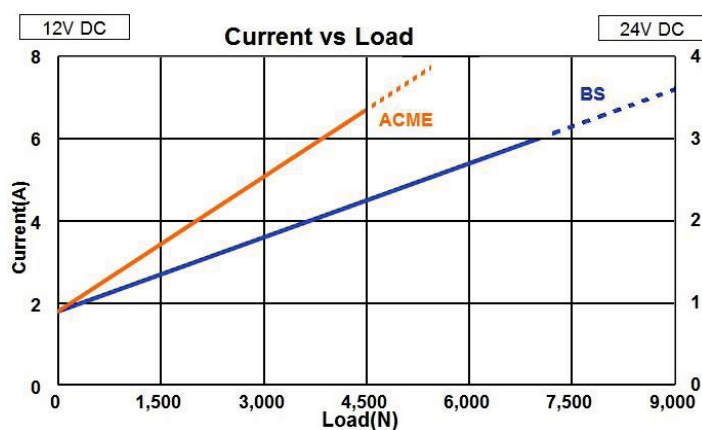
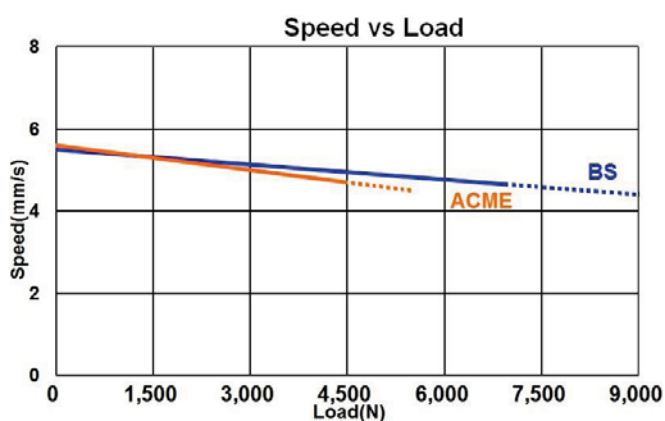
- ◆ Input voltage : 12V DC
- ◆ Digital positioning feedback : Hall Sensor, Reed Sensor
- ◆ Analog positioning feedback : Potentiometer
- ◆ Stainless extension tube

Compatibility

Control Box : CIS1, CIS2

Performance Data

Model No.	Max. Dynamic Load (N)	Speed (mm/s)		Current (A)			
		No load	Full load	No load		Full load	
				12V	24V	12V	24V
ID10S-xx40E5Bxxx-xxxxxxx	9000	5.5	4.4	1.8	0.9	7.2	3.6
ID10S-xx40E5Axxx-xxxxxxx	5500	5.6	4.5	1.8	0.9	7.8	3.9



Dimensions

◆ ID10S Ball Screw

18"

24"

36"

Stroke (±5 mm)	450	600	900
Retracted Length (A±3 mm)	810	963	1315

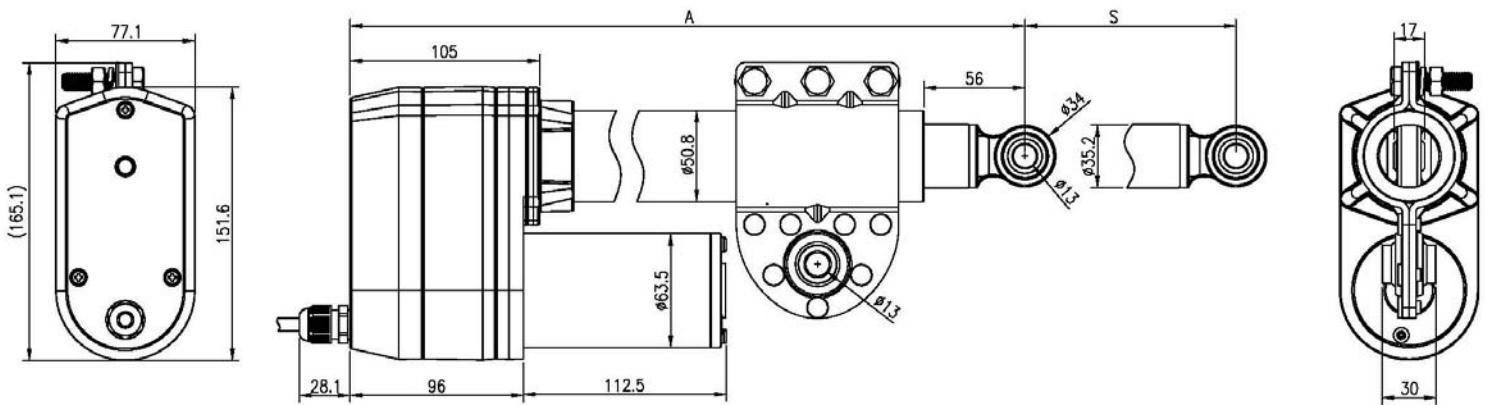
◆ ID10S ACME

18"

24"

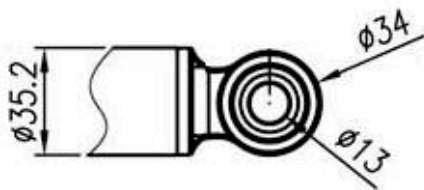
36"

Stroke (±5 mm)	450	600	900
Retracted Length (A±3 mm)	764	917	1269

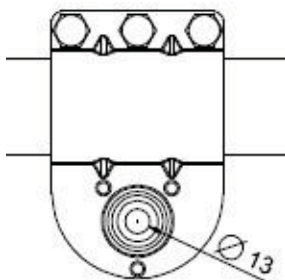


Unit : mm

◆ Front connector



◆ Rear connector



Ordering Key

ID10S — —

Input Voltage

24 : 24V DC

12 : 12V DC

Gear Ratio

40 : 40:1

Motor

E : Standard motor (2900rpm)

Spindle Type

5A : ACME / 5TPI

5B : Ball Screw / 5TPI

Stroke

450 : 450mm

600 : 600mm

900 : 900mm

Front Mounting

Spherical Rod Eye

0 : $\Phi=13\text{mm}$ 1 : $\Phi=12\text{mm}$ 2 : $\Phi=1/2''$ 3 : $\Phi=16\text{mm}$

Rear Mounting

Clamp with Spherical Rod Eye

0 : $\Phi=13\text{mm}$ 1 : $\Phi=12\text{mm}$ 2 : $\Phi=1/2''$ 3 : $\Phi=16\text{mm}$

Detector

H : Hall sensor R : Reed sensor P : Potentiometer 0 : None

Power wire length

1 : 250mm (with tinned wires)/Black

Color

S : Silver B : Black

Protection

5 : IP65

Others

0 : Aluminum back cover

2 : Aluminum back cover + stainless extension tube